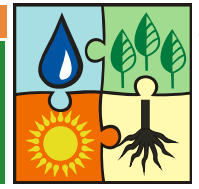


For flower beds, turf, vegetables planting, seedling

DIEHARD™ COMPLETE ORGANIC



ALLIANCE

HORTICULTURAL

"The Industry's Most Complete Naturally Transplant & Seedling Soil Amendment"

Product Features

Endomycorrhizal Fungi

Beneficial Bacteria

Humic Acid

Sea Kelp

Amino Acids

Trichoderma

Yucca Plant Extracts

Vitamin B Complex

Lasting Residual

Product Benefits

IMPROVES

Survival
Rooting
Flowering
Water Absorption
Nutrient Availability
Yields and Production
Client Satisfaction
& Goodwill

REDUCES

Plant Losses
Fertilizer Use
Need Of Pesticides
Heat Stress Damage
Irrigation Frequency
Losses From Drought
Conditions

Compatibility

Species: All plants that associate with endomycorrhizal fungi.

Fungicides: Non-systemic fungicides normally have no effect. Foliar applied fungicides normally have no effect. Systemic fungicides may be applied 2 weeks before or after use of product. Fungicide use according to label instructions do not extinguish mycorrhiza, they only inhibit development temporarily.

Non Plant Food Ingredient

GUARANTEED ANALYSIS

Endomycorrhizal Fungi	14 spores per gram <i>Funneliformis mosseae</i> , <i>Rhizophagus intraradices</i> , <i>Rhizophagus fasciculatus</i> , <i>Glomus dussii</i> , <i>Rhizophagus clarus</i> , <i>Septoglomus deserticola</i> , <i>Glomus microaggregatum</i> .
Ectomycorrhizal Fungi	66,079 spores per gram to include: <i>Pisolithus tinctorius</i> (56,828) and <i>Rhizopogon</i> (9,251).
<i>Bacillus</i> , <i>Pseudomonas</i> & <i>Streptomyces</i> Species	22,148,150 CFU's per gram Genus Bacillus: <i>B. megaterium</i> , <i>B. subtilis</i> , <i>B. amyloliquefaciens</i> , <i>B. azotoformans</i> , <i>B. licheniformis</i> , <i>B. pumilus</i> , <i>B. firmus</i> , <i>B. coagulans</i> , <i>Geobacillus stearothermophilus</i> , and <i>Paenibacillus polymyxa</i> , <i>Paenibacillus Durum</i> . Genus Pseudomonas: <i>P. putida</i> , <i>P. fluorescences</i> , <i>P. Aureofaciens</i> . Genus Streptomyces: <i>S. lydicus</i> , <i>S. griseus</i> , <i>S. coelicolor</i> .
Trichoderma	7,996 CFU's per gram Genus <i>Trichoderma</i> : <i>Trichoderma hamatum</i> , <i>Trichoderma harzianum</i> , <i>Trichoderma reesei</i> .
Humic Acids	41 % derived from Leonardite
Sea Kelp Extract	19% <i>Ascophyllum nodosum</i>
Yucca Plant Extract	1% <i>Yucca schidigera</i>

OTHER INGREDIENTS

Root Promoting Vitamin	B, B2, B3, B5, B6, B7, B9, B12, C, K, Biotin
Amino Acids	<i>L-Alanine</i> , <i>L-Argine</i> , <i>L-Aspartic Acid</i> , <i>L-Cystine</i> , <i>L-Glutamic Acid</i> , <i>L-Glycine</i> , <i>L-Histidine</i> , <i>L-Isoleucine</i> , <i>L-Leucine</i> , <i>L-Lysine</i> , <i>L-Methionine</i> , <i>L-Phenylalanine</i> , <i>L-Proline</i> , <i>L-Threonine</i> , <i>L-Serine</i> , <i>L-Tryptophan</i> , <i>L-Tyrosine</i> , <i>L-Valine</i> .
Additional Microbials	Purines, Pyrimidines, Fulvic Acid, Dextrose, Sucrose.

© 1997-2019 By Horticultural Alliance, Inc. DIEHARD™, BioRush®, and Horta-Sorb® trade names are property of: Horticultural Alliance, Inc., 1550 66th Av. Dr. E., Sarasota, FL 34243 Tel: 941-739-9121, Toll-free: 800-628-6373, Fax: 941-752-1890
Web Page: <http://www.horticulturalalliance.com>, E-Mail: info@horticulturalalliance.com

Rev. 012019



For flower beds, turf, vegetables planting, seedling

DIEHARD™ COMPLETE ORGANIC



"The Industry's Most Complete Naturally Transplant & Seedling Soil Amendment"

Directions For Use

Flower Beds & Vegetable Plantings: Mix thoroughly into the first 3" to 4" of soil at the rate of 2 lbs. per 100 sq. ft. of bed.

Garden Seeding: Band beneath seed or transplants and cover with 1/4 to 1/2 inch of soil at the rate of 1 tsp. per plant or one cup per 25 feet of row.

Bulbs: Place one tablespoon beneath each when planting.

Vertimulching: Bore 2 inch diameter holes on a 2.5 to 3 foot grid pattern in the vicinity of roots and mix 4 oz. of product with soil removed and return to fill hole.

Planting Trees & Shrubs: We strongly recommend using DIEHARD™ Transplant or DIEHARD™ Palm Transplant when transplanting because these products contain over 25% of Horta-Sorb® - horticultural grade super absorbent, which is very beneficial when transplanting. However, in the event you wish to use a product that does not contain the gels DIEHARD™ Complete is the perfect match. Mix with backfill in the upper 1/3 of planting hole being sure product is next to the roots.

Configuration	lb./cu.yd.	No/yd ³	Propagules
Gen. Purpose Mix	3	0	118/gal.
Larger than 7 gal.	1		8250/lb.
7 gallon	1	35	236
5 gallon	1.25	52	198
3 gallon	1.5	72	172
2 gallon	1.75	125	116
1 gallon	3	260	95
6 inch	4	450	73
4 inch	6	960	52
50 cell flat	8	170	8
72 cell flat	10	189	6
128 cell flat	14	220	4

Storage & Handling

Store in a cool, dry place. Avoid high temperatures and direct sunlight. Product shelf life is up to two years.

Health & Safety

- Inhalation** If dusty conditions exist, wear a dust mask.
- Ingestion** Drink large amounts of water, induce vomiting, and seek medical attention.
- Eyes** Flush with large amounts of water.
- Safety** Product becomes very slippery when wet.

Limited Warranty: All information contained herein is offered in good faith. There are no warranties of merchantability of fitness for a particular purpose which extend beyond the information contained herein. Our liability is limited to replacement of any product which does not meet these specifications.

Plant Size	Container or Ball Size	Rate
Flower/Veg.	4 inch	1 tsp/½ oz.
Shrub	1 gal.	2 tbs/1 oz.
Shrub	3 gal.	8 oz./4 oz.
Shrub	5 gal.	1 cup/8 oz.
2" diameter	20 gal/24" ball	2 cups/1 lbs.
3" diameter	30 gal/32" ball	4 cups/2 lbs.
4" diameter	50 gal/44" ball	8 cups/4 lbs.
6" diameter	200 gal/60" ball	8 lbs.

Turf: Sod, Seed, Sprigs: Mix 3 lbs. per 1,000 square feet and rake into the first 1 inch of soil.

Potting/Propagation Mix: Generally, 3 lbs. per cubic yard or 1/2 cup per cubic foot.

Distributed by:

